



Fee Schedule of Patent Registration in China

Table 1: Charges for filing to registration

Description	Official Fees (CNY, click here to check the rate)	Prof. Fees (USD)
Application Drafting		
Drafting specification (NOT including drawings)	NA	100 per 1,000 Chinese characters
Translation	NA	0.1 per English words
proofreading	NA	0.05 per English words
Filing		
Filing Patent Application/ National Phase Entry	Invention: 900 utility model/ design: 500	400
Additional claims over 10	300	NA
Additional pages over 30	30	NA
Additional similar designs	NA	50
Claiming priority	80	50
Publication (only for invention)	50	NA
Prosecution		
Requesting substantive examination (only for invention)	2500	50
Response to OAs	NA	Defect matters: 150~; Substantive matters: 350~
Re-examination for refusal	Invention: 1000 utility model or design: 300	hourly rate:120 hourly rate:120
Registration		
Annual fee for the grant year	See Table 2	50
Miscellaneous		
Restoration fees (Grace period fees) for exceeding two months	1000	50
Request for extension of a period		
First extension (per month)	300	50
Second extension (per month)	2000	50
Registration fees for change		
Change of Inventor, Applicant, Patentee	200	200
Patent evaluation report		
Utility model	2400	300
Design	2400	300

Notes:



- We will conduct a preliminary search before filing. If you need a search report, you will be charged additional prof. fees.
- Applicant can claim a priority within 6 months for designs or 12 months for utility model/ inventions from the priority filing date. The priority document should be submitted within three months from the Chinese filing date.
- Applicant can enter PCT national phase in China within 30 months from the priority filing date.
- We recommend you utilize our calculator for official fees on our [HOMEPAGE](#).

Table 2: Charges for maintenance

The year from the filing date		Official Fees (CNY, click here to check the rate)	Prof. Fees (USD)
Invention	1-3th year: annually	900	50 each payment (even though you pay for multiple years at the same time)
	4-6th year: annually	1200	
	7-9th year: annually	2000	
	10-12th year: annually	4000	
	13-15th year: annually	6000	
	16-20th year: annually	8000	
Utility/Design	1-3th year: annually	600	
	4-5th year: annually	900	
	6-8th year: annually	1200	
	9-10th year: annually	2000	
	11-15th year: annually (only for design)	3000	

Note:

- You can pay the multiple years' annual fees to the Chinese government in advance.
- We recommend you utilize our calculator for official fees on our [HOMEPAGE](#).
- Late Payment Fee for Annual Fees 5% of the overdue amount per month

Timeline for filing:

We will file applications within 10 business days for designs or 20 business days for utility models/ inventions from the receipt of all required docs;

Duration: about 6-12 months for utility model/ design; 2-3 years for invention.

Required docs for filing utility models/ inventions:

- [Signed POA](#);

- [Filled INSTRUCTIONS FOR PATENT \(UTILITY/ INVENTION\) REGISTRATION](#);

- Specification and drawings in Word format;
- Chinese translation (if any) and English translation for reference (if original language is NOT english);
- Certified copy of the prior application (if any);

Required docs for filing designs:

- [Signed POA](#);

- [Filled INSTRUCTIONS FOR FOR DESIGN REGISTRATION](#);



- Drawings (line drawings/ renderings with high quality in 7 orthographic views as ; or 3D file)
- Certified copy of the prior application (if any);

Read more:

[Comprehensive Guide to Patent Application in China 2025](#)

[Guideline of Design Registration in China 2025](#)

[How to Enter the PCT National Phase in China: A Comprehensive Guide 2025](#)

[Comprehensive Guide to Patent Official Fees in China \(2025\)](#)

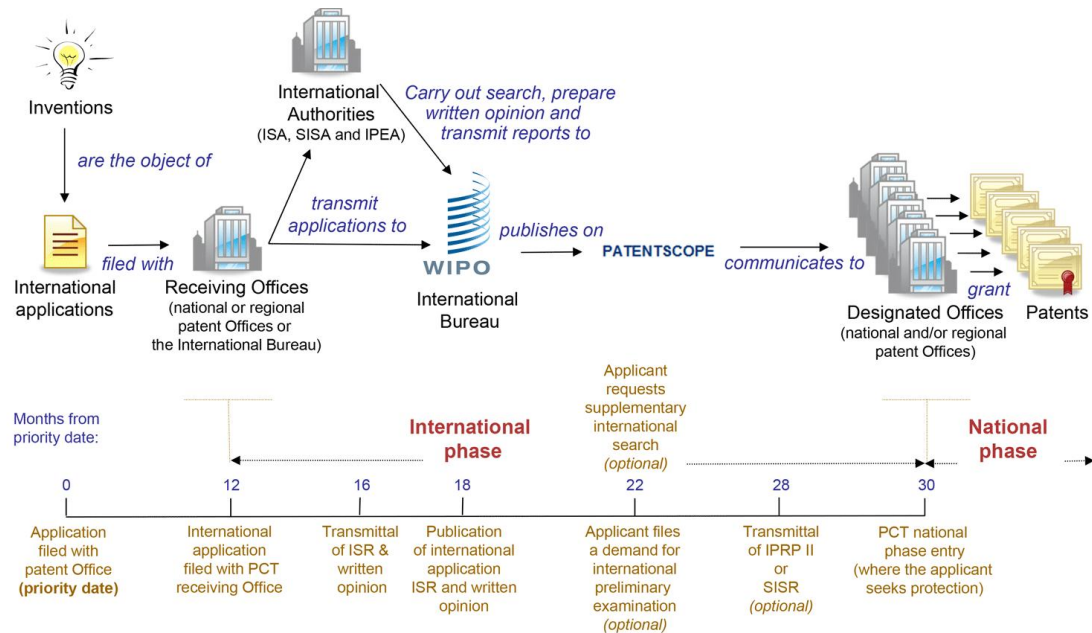


Fig. 1 Folowchart of PCT Application

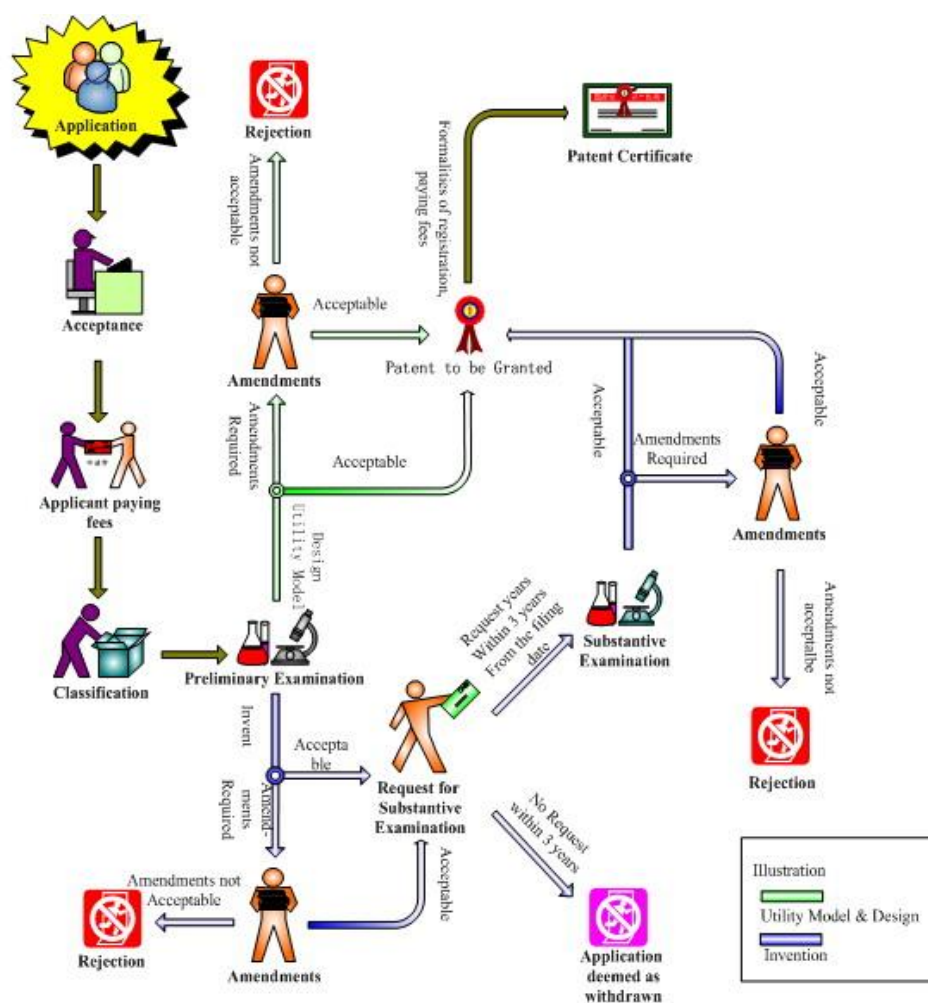


Fig. 2 Flowchart of Patent Application in China